

# COALBANKS SCHOOL

## 274 Coalbanks Blvd W

### West Side

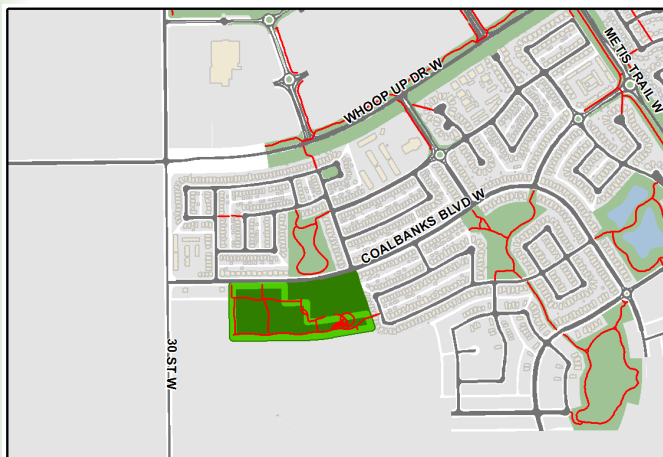


CITY OF  
*Lethbridge*



Coalbanks School is located in the rapidly growing Copperwood neighbourhood. The large playground includes several slides, swings and climbing structures for the monkey in your life. The park also boasts basketball courts, soccer and baseball fields. There really is something for everyone to explore in this park.

Take a wander down the asphalt pathway and explore the edible grove and outdoor amphitheater on the east side of the school. The unique features of this park are sure to ignite the imagination.



**Please note:** dogs are not permitted on school or sports fields.

Impromptu play on sports fields and outdoor teaching areas is permitted as long as the area isn't in use. Scheduled play on all sports fields must be pre-booked through Recreation and Culture.